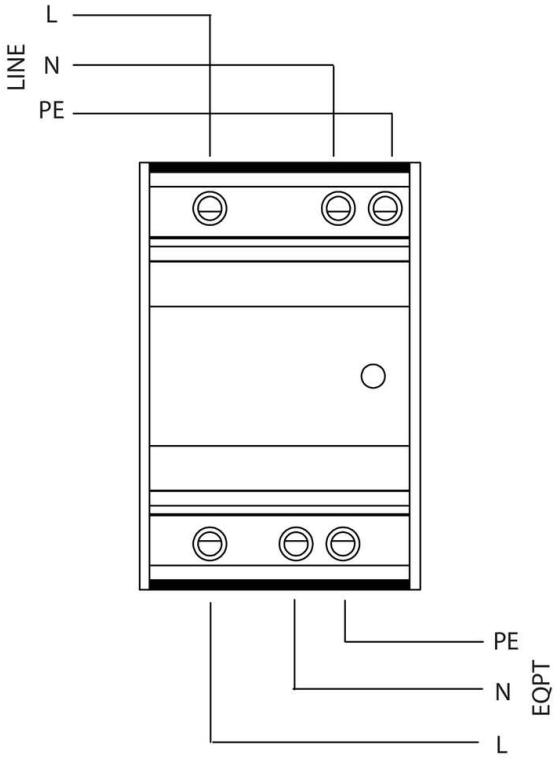


Install Manual

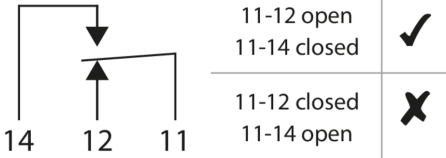
HSF1-40-100-275



Installation



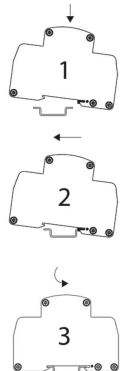
Alarm



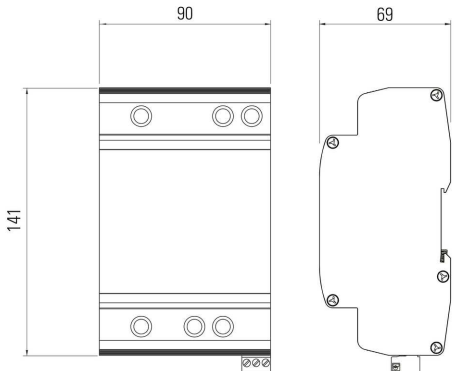
Terminals

Terminal Type		
min Capacity	2.5 mm ²	0.5 mm ²
max Capacity	16 mm ²	2.5 mm ²
Torque	2 Nm	0.6 Nm
Wire Stripping Length	12mm	5mm

Mounting



Dimensions



Electrical Specifications

Connection type		Series
Modes of protection		L-N, L-PE, N-PE
Nominal voltage	U ₀	230VAC
Short circuit withstand level	I _{SSCR}	25kA
Maximum backup fuse		40A

Mechanical Specifications

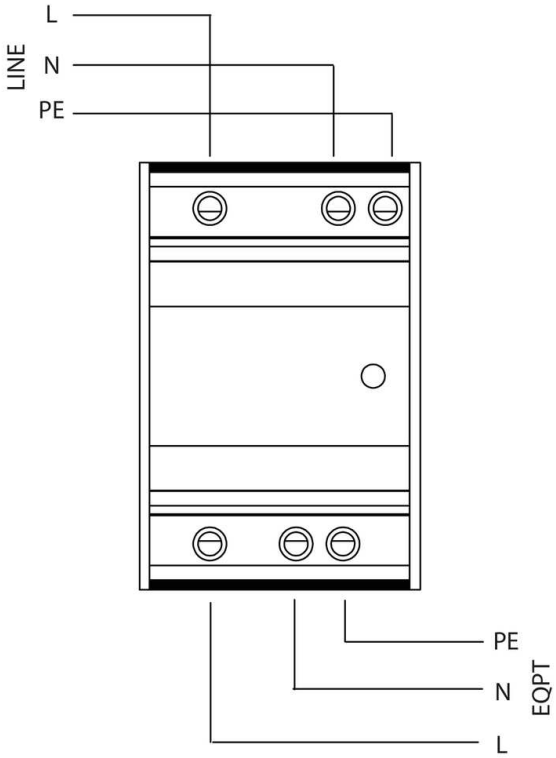
Minimum operating temperature		-40°C
Maximum operating temperature		70°C
Minimum operating humidity		5%
Maximum operating humidity		95%
Mounting method		TS35 DIN Rail
Environmental rating		IP20

Install Manual

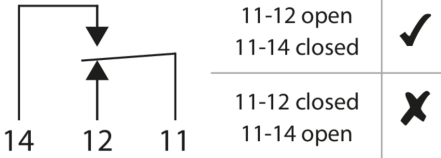
HSF1-63-100-275



Installation



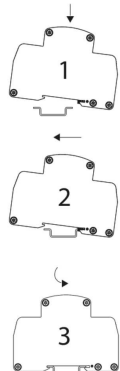
Alarm



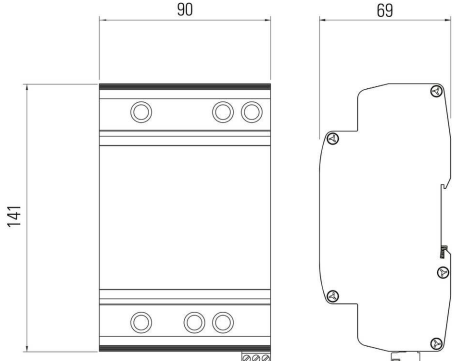
Terminals

Terminal Type		
min Capacity	2.5 mm ²	0.5 mm ²
max Capacity	16 mm ²	2.5 mm ²
Torque	2 Nm	0.6 Nm
Wire Striping Length		

Mounting



Dimensions



Electrical Specifications

Connection type		Series
Modes of protection		L-N, L-PE, N-PE
Nominal voltage	U ₀	230VAC
Short circuit withstand level	I _{SSCR}	25kA
Maximum backup fuse		63A

Mechanical Specifications

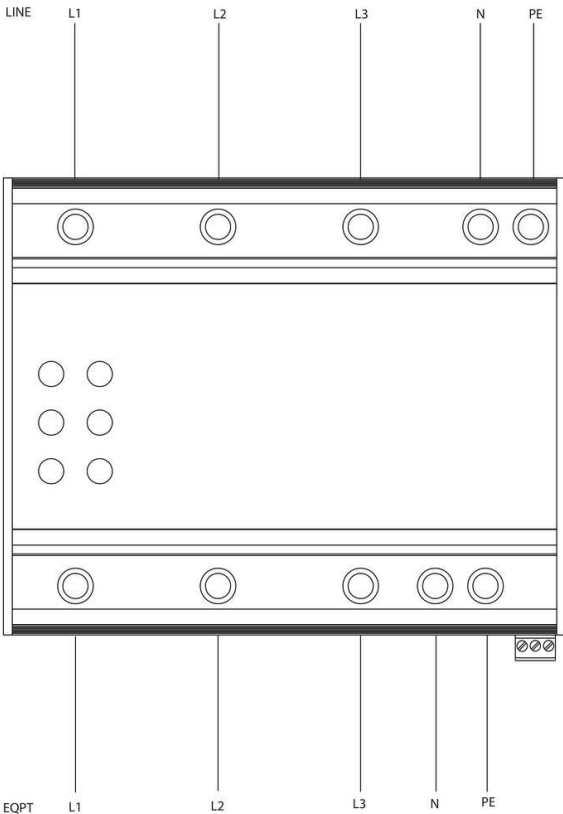
Minimum operating temperature		-40°C
Maximum operating temperature		70°C
Minimum operating humidity		5%
Maximum operating humidity		95%
Mounting method		TS35 DIN Rail
Environmental rating		IP20

Install Manual

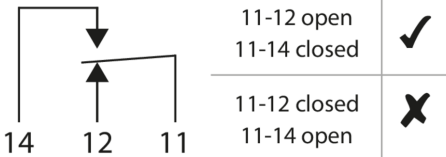
HSF3-40-100-275



Installation



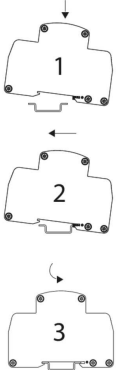
Alarm



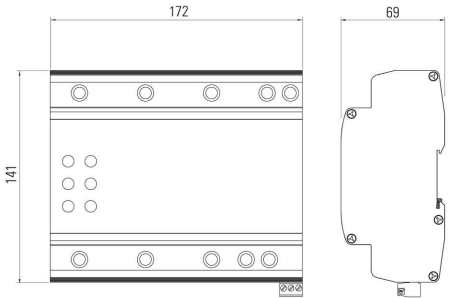
Terminals

Terminal Type		
min Capacity	2.5 mm ²	0.5 mm ²
max Capacity	16 mm ²	2.5 mm ²
Torque	2 Nm	0.6 Nm
Wire Stripping Length		

Mounting



Dimensions



Electrical Specifications

Connection type		Series
Modes of protection		L-N, L-PE, N-PE
Nominal voltage	U ₀	230VAC
Short circuit withstand level	I _{SSCR}	25kA
Maximum backup fuse		40A

Mechanical Specifications

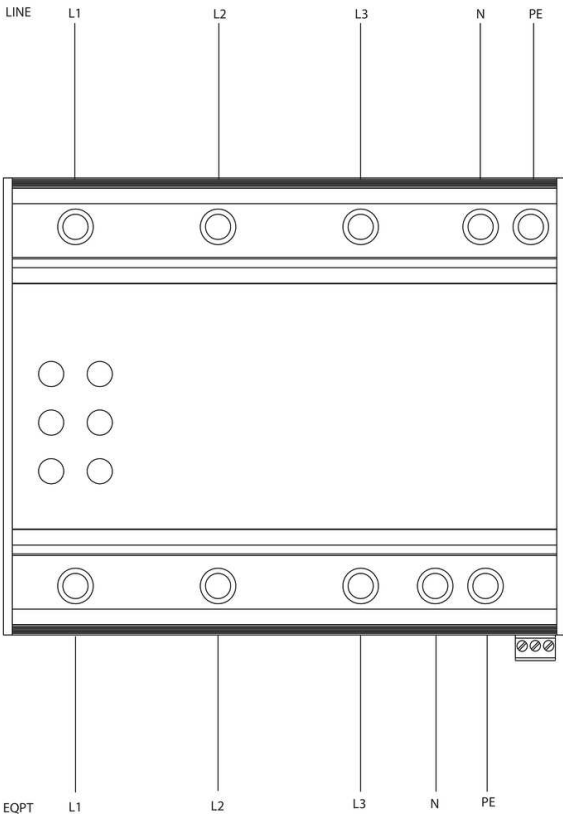
Minimum operating temperature		-40°C
Maximum operating temperature		70°C
Minimum operating humidity		5%
Maximum operating humidity		95%
Mounting method		TS35 DIN Rail
Environmental rating		IP20

Install Manual

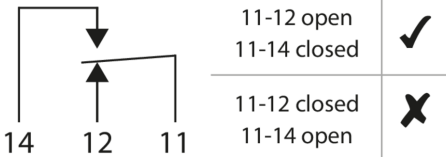
HSF3-63-100-275



Installation



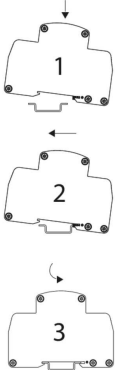
Alarm



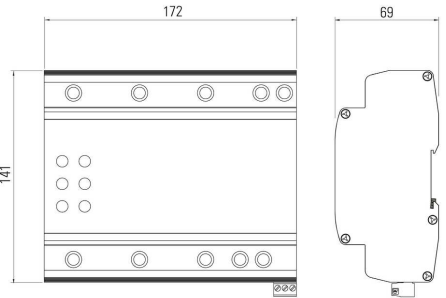
Terminals

Terminal Type		
min Capacity	2.5 mm ²	0.5 mm ²
max Capacity	16 mm ²	2.5 mm ²
Torque	2 Nm	0.6 Nm
Wire Stripping Length		

Mounting



Dimensions



Electrical Specifications

Connection type		Series
Modes of protection		L-N, L-PE, N-PE
Nominal voltage	U ₀	230VAC
Short circuit withstand level	I _{SSCR}	25kA
Maximum backup fuse		63A

Mechanical Specifications

Minimum operating temperature		-40°C
Maximum operating temperature		70°C
Minimum operating humidity		5%
Maximum operating humidity		95%
Mounting method		TS35 DIN Rail
Environmental rating		IP20